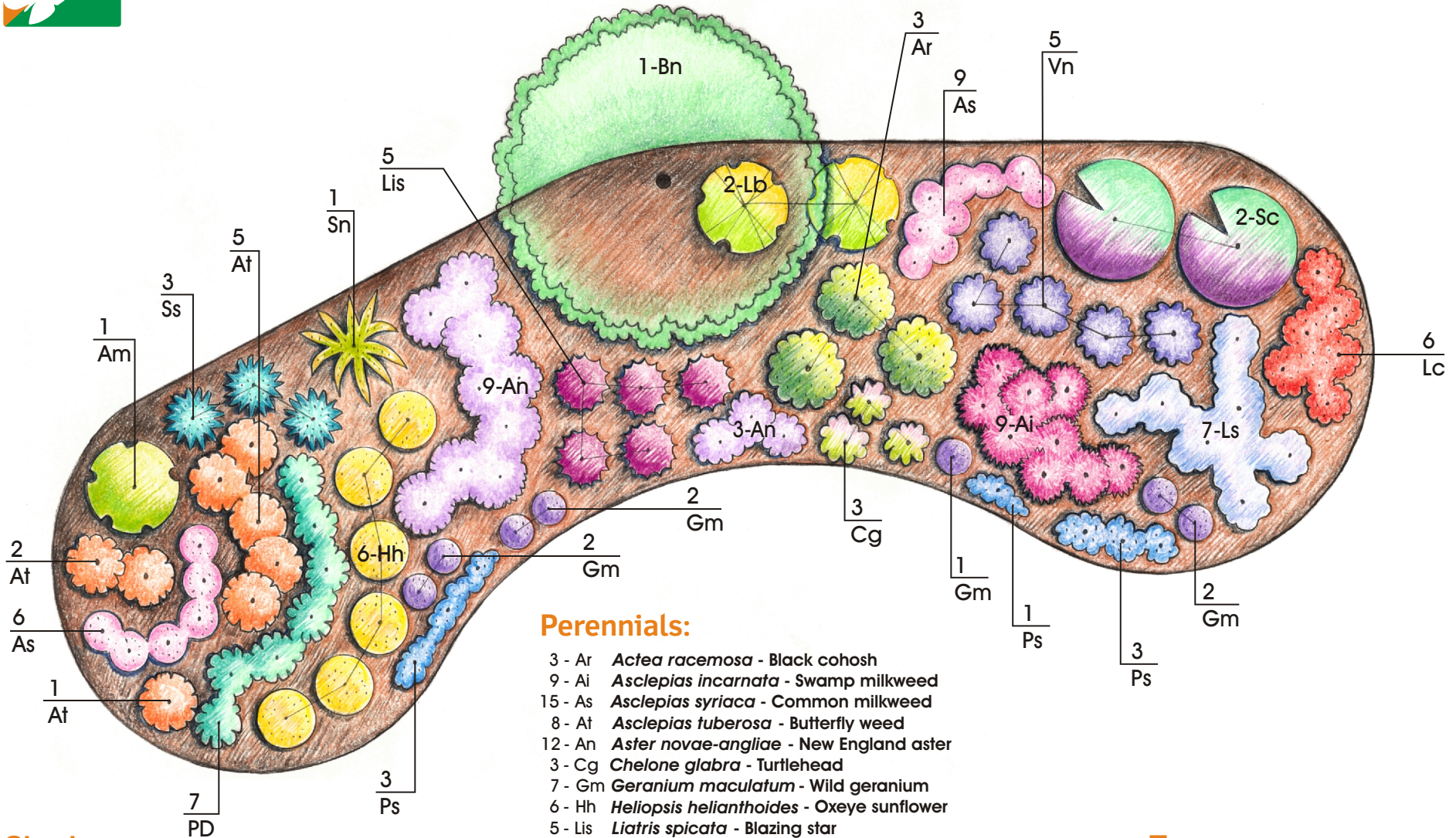




# Butterfly & Hummingbird Garden



## Shrubs:

- 1 - Am *Aronia melanocarpa* - Black chokeberry
- 2 - Lb *Lindera benzoin* - Spicebush
- 2 - Sc *Sambucus canadensis* - Elderberry

## Perennials:

- 3 - Ar *Actea racemosa* - Black cohosh
- 9 - Ai *Asclepias incarnata* - Swamp milkweed
- 15 - As *Asclepias syriaca* - Common milkweed
- 8 - At *Asclepias tuberosa* - Butterfly weed
- 12 - An *Aster novae-angliae* - New England aster
- 3 - Cg *Chelone glabra* - Turtlehead
- 7 - Gm *Geranium maculatum* - Wild geranium
- 6 - Hh *Heliopsis helianthoides* - Oxeye sunflower
- 5 - Lis *Liatris spicata* - Blazing star
- 6 - Lc *Lobelia cardinalis* - Cardinal flower
- 7 - Ls *Lobelia siphilitica* - Great blue lobelia
- 7 - Pd *Penstemon digitalis* - Beard-tongue
- 7 - Ps *Phlox stolonifera* - Creeping phlox
- 3 - Ss *Schizachyrium scoparium* - Little bluestem
- 1 - SN *Sorghastrum nutans* - Indian grass
- 5 - Vn *Vernonia noveboracensis* - New York ironweed

## Trees:

- 1 - Bn *Betula nigra* - River birch  
(multi-stemmed trunk preferred)

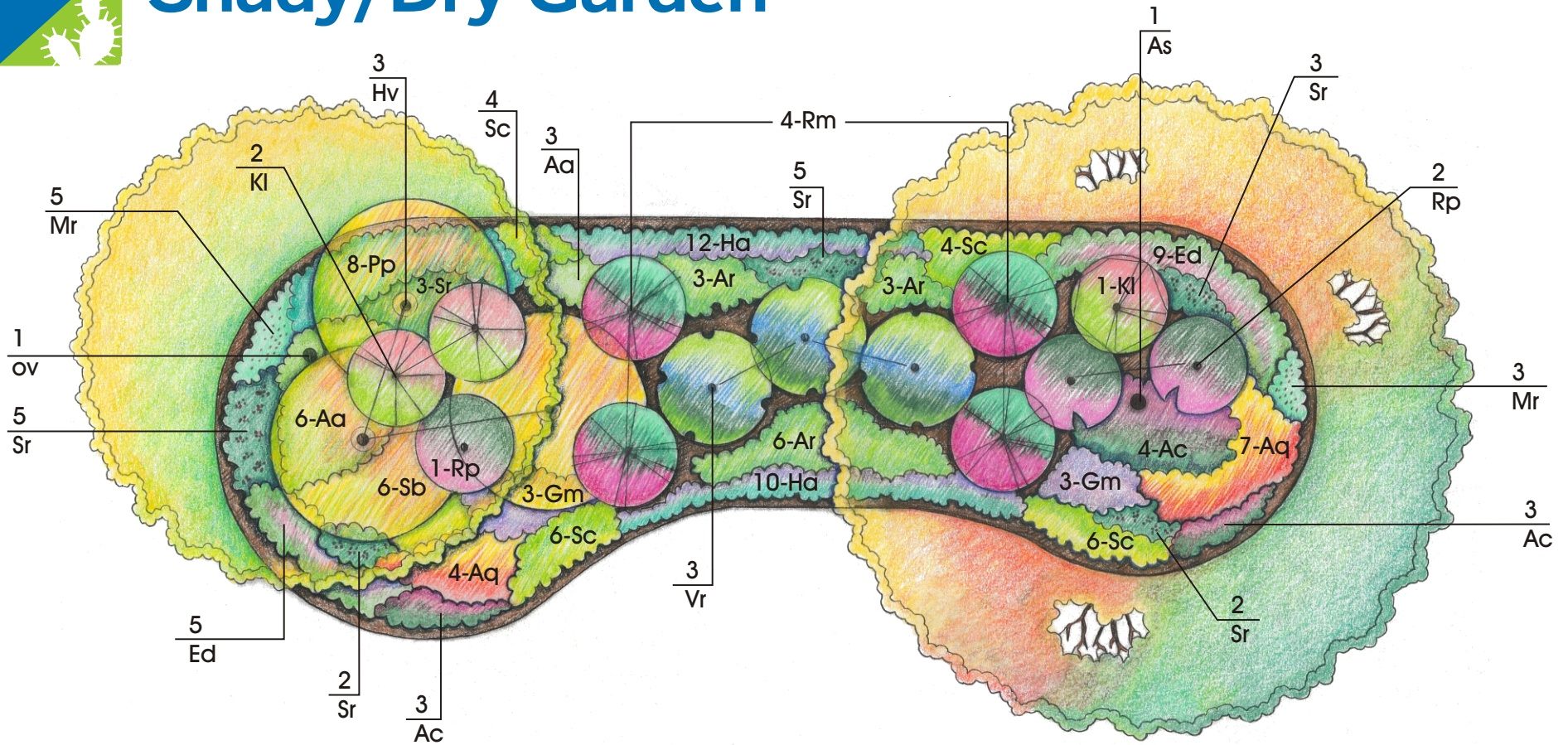
Modifications to the plan might be needed or desired based on space limitations, proximity to buildings or other factors.

Scale 5/16" = 1'-0"

You can find this and other native garden templates at [www.iConservePA.org](http://www.iConservePA.org)



# Shady/Dry Garden



## Shrubs:

- 3 - Hv *Hamamelis virginiana* - Witch-hazel
- 3 - Kl *Kalmia latifolia* - Mountain laurel
- 4 - Rm *Rhododendron maximum* - Rosebay
- 3 - Rp *Rhododendron periclymenoides* - Pinxter flower
- 3 - Vr *Viburnum recognitum* - Arrow-wood

## Perennials:

- 11 - Aq *Aquilegia canadensis* - Wild columbine
- 6 - Ac *Asarum canadense* - Wild ginger
- 14 - Ed *Eurybia (Aster) divaricatus* - White wood aster
- 12 - Ar *Actea racemosa (Cimicifuga)* - Black cohosh
- 9 - Aa *Ageratina altissima (Eupatorium rugosum)* - White snakeroot
- 6 - Gm *Geranium maculatum* - Wild geranium
- 22 - Ha *Heuchera americana* - Alumroot
- 8 - Mr *Mitchella repens* - Partridge-berry
- 8 - Pp *Podophyllum peltatum* - Mayapple
- 12 - Sc *Sanguinaria canadensis* - Bloodroot
- 20 - Sr *Smilacina racemosa* - False Solomon's seal
- 6 - Sb *Solidago bicolor* - White goldenrod

## Trees

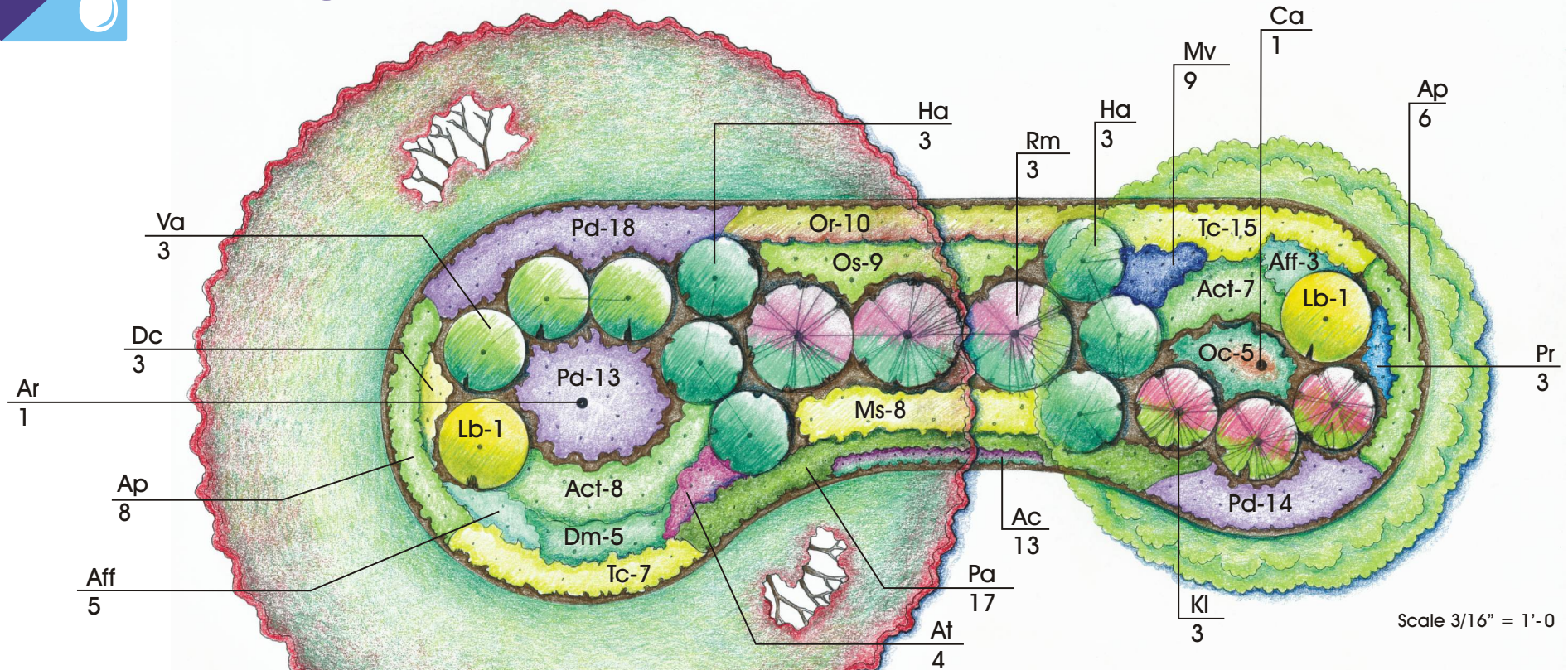
- 1 - As *Acer saccharum* - Sugar maple
- 1 - Ov *Ostrya virginiana* - Hop hornbeam

Scale 3/16" = 1'-0



# Shady/Moist Garden

Alternate view



## Trees

- 1 - Ar **Acer rubrum** - Red maple  
(size 2 1/2" - 3" cal. Single stem )  
large deciduous
- 1 - Ca **Cornus alternifolia** - Alternate-leaved  
(Pagoda) dogwood  
(6'-7' heavy - well branched) ornamental

## Shrubs:

- (#3 Container minimum up to #5 - #7 Container)
- 6 - Ha **Hydrangea arborescens** - Wild hydrangea
- 3 - Kl **Kalmia latifolia** - Mountain laurel
- 2 - Lb **Lindera benzoin** - Spicebush
- 3 - Rm **Rhododendron maximum** - Rosebay (size 36" BB)
- 3 - Va **Viburnum acerifolium** - Maple-leaved viburnum

## Ferns:

- (#1 - #2 Container up to #3 Container)
- 14 - Ap **Adiantum pedatum** - Maidenhair fern
- 5 - Dm **Dryopteris marginalis** - Evergreen shield fern
- 9 - Os **Osmunda claytoniana** - Interrupted fern
- 17 - Pa **Polystichum achrostichoides** - Christmas fern
- 8 - Ms **Metfeucia struthiopteris** - Ostrich fern
- 10 - Or **Osmunda regalis** - Royal fern
- 5 - Oc **Osmunda cinnamomea** - Cinnamon fern
- 6 - Aff **Athyrium felix-femina** - Lady fern

## Perennials:

- (#1 - #2 - #3 Container)
- 4 - At **Arisaema triphyllum** - Jack-in-the-pulpit
- 13 - Ac **Asarum canadense** - Wild ginger  
(eg. #1 Container)
- 15 - Act **Actea racemosa** - Black cohosh  
(eg. #3 container)
- 3 - Dc **Dicentra cucullaria** - Dutchman's  
breeches
- 9 - Mv **Mertensia virginica** - Virginia bluebells  
(eg. #2 or #3 Container)
- 45 - Pd **Phlox divaricata** - Wild blue phlox  
(eg. #1 Container)
- 3 - Pr **Polemonium reptans** - Jacob's ladder
- 22 - Tc **Tiarella cordifolia** - Foamflower

DEBRA A. KIRKPATRICK RLA

LANDSCAPE ARCHITECTURAL DESIGN

725 Piketown Road, Harrisburg, PA 17112  
Phone: (717)671-1636 Fax: (717)489-1438  
Email: dakirkpatrick@comcast.net

Modifications to the plan might be needed or desired based on space limitations, proximity to buildings or other factors. This garden depicts plants that prefer shady moist conditions. As plantings mature, under story conditions will become shady and adaptations may be needed. You can find this and other native garden templates at [www.iConservePA.org](http://www.iConservePA.org)



# Shady/Moist Garden Elevation



DEBRA A. KIRKPATRICK RLA

LANDSCAPE ARCHITECTURAL DESIGN

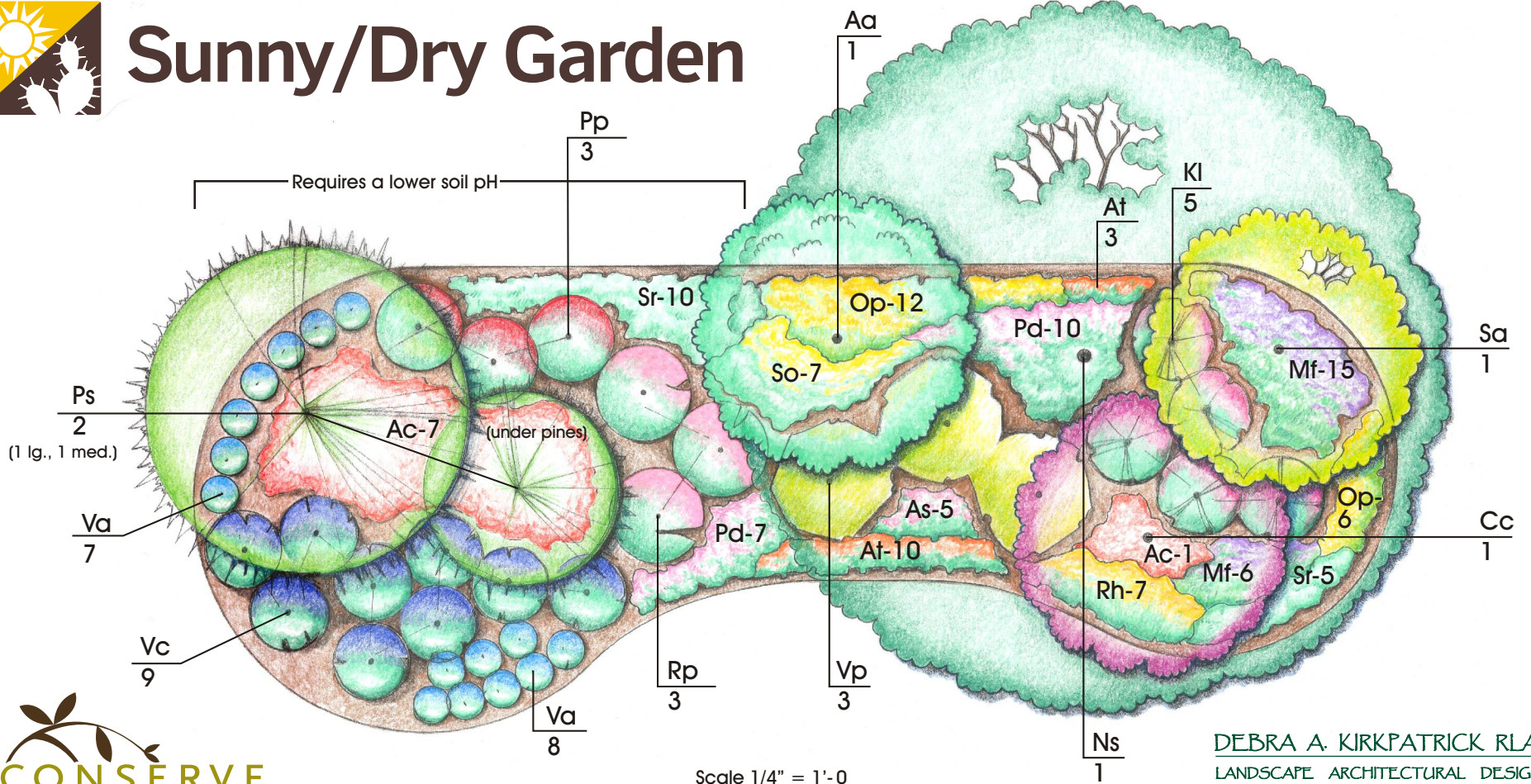
725 Piketown Road, Harrisburg, PA 17112  
Phone: (717)671-1636 Fax: (717)489-1438  
Email: dakirkpatrick@comcast.net

Note: Template can be adapted by reducing scale or removing species to fit your specific garden needs.

Scale 3/16" = 1'-0



# Sunny/Dry Garden



**DEBRA A. KIRKPATRICK RLA**  
 LANDSCAPE ARCHITECTURAL DESIGN  
 725 Piketown Road, Harrisburg, PA 17112  
 Phone: (717)671-1636 Fax: (717)489-1438  
 Email: dakirkpatrick@comcast.net

## Trees

- 2 - Ps ***Pinus strobus* - Eastern white pine**  
Vary sizes 1 large (9'-10') 1 med (7'-8') evergreen
- 1 - Ns ***Nyssa sylvatica* - Black-gum**  
(1 1/2"-2" cal.) 1 large deciduous
- 1 - Sa ***Sassafras albidum* - Sassafras**  
(1" cal.) lg. 1 med deciduous
- 1 - Cc ***Cercis canadensis* - Redbud**  
(1" cal.) ornamental
- 1 - Aa ***Amelanchier arborea* - Downy serviceberry**  
(1" cal.) ornamental

## Shrubs:

- (#2 - #3 container minimum to 5# - #7 container or eq. BB)
- 5 - Kl ***Kalmia latifolia* - Mountain laurel**
- 3 - Pp ***Photinia pyrifolia (Aronia arbutifolia)* -Red chokeberry**
- 3 - Rp ***Rhododendron periclymenoides* - Pinxterbloom azalea**
- 15 - Va ***Vaccinium angustifolium* - Lowbush blueberry**
- 9 - Vc ***Vaccinium corymbosum* - Highbush blueberry**
- 3 - Vp ***Viburnum prunifolium* - Blackshaw**

## Perennials:

- (#1 container minimum - #2 to #3 container)
- 20 - Ac ***Aquilegia canadensis* - Wild columbine**
- 5 - As ***Asclepias syriaca* - Common milkweed**
- 13 - At ***Asclepias tuberosa* - Butterfly weed**
- 21 - Mf ***Mondara fistulosa* - Bee-balm (Wild bergamot)**
- 18 - Op ***Oenothera perennis* - Sundrops**
- 17 - Pd ***Penstemon digitalis* - Beard-tongue**
- 7 - Rh ***Rudbeckia hirta* - Black-eyed Susan**
- 15 - Sr ***Smilacina racemosa* - False Solomon's seal**
- 7 - So ***Solidago rugosa* - Wrinkle-leaf goldenrod**

Modifications to the plan might be needed or desired based on space limitations, proximity to buildings or other factors.

This garden depicts plants that prefer sunny dry conditions. As plantings mature, under story conditions will become shady and adaptations may be needed.

You can find this and other native garden templates at [www.iConservePA.org](http://www.iConservePA.org)



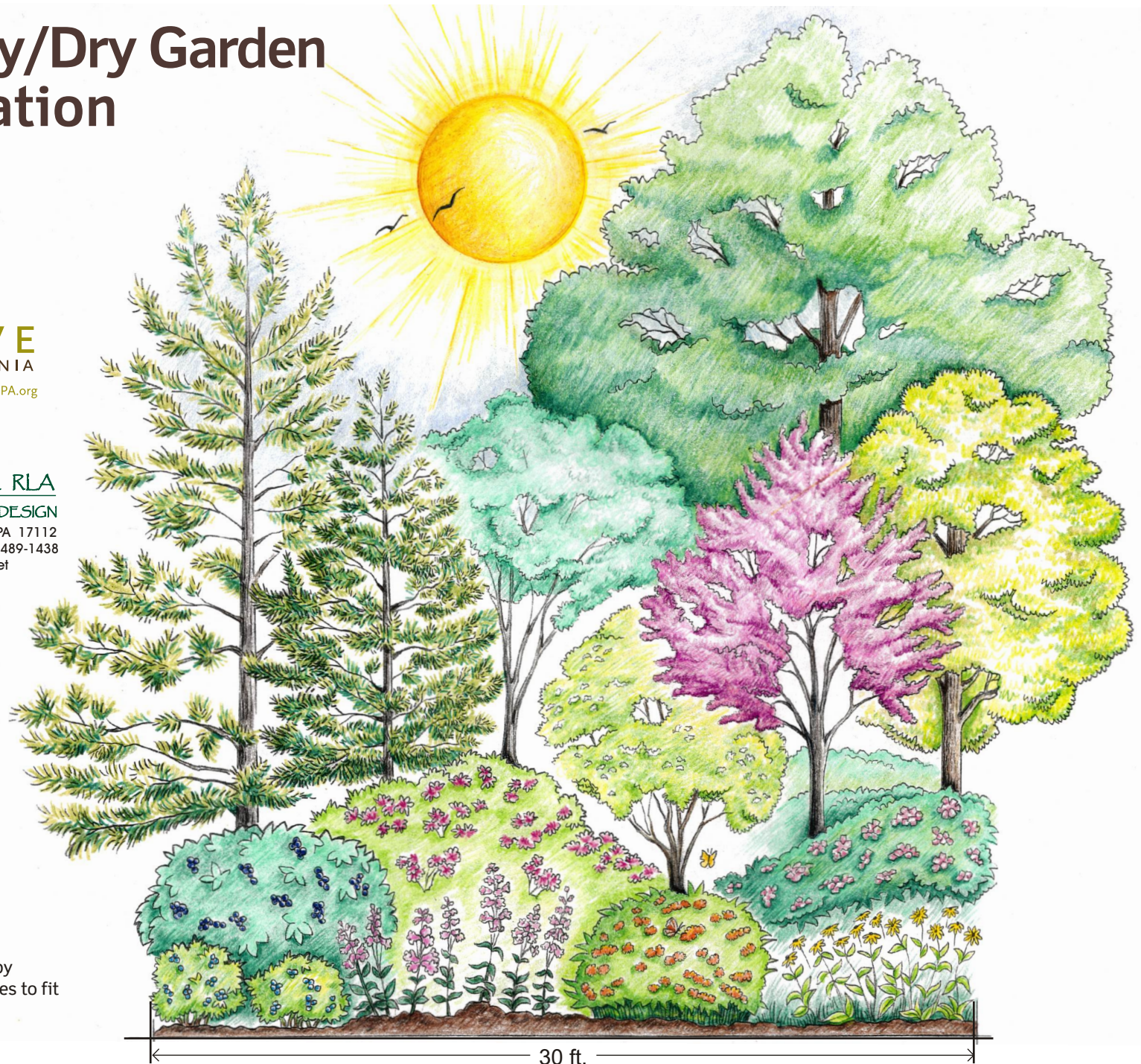
# Sunny/Dry Garden Elevation

**iCONSERVE**  
PENNSYLVANIA  
*take conservation personally* | [iConservePA.org](http://iConservePA.org)

**DEBRA A. KIRKPATRICK RLA**  
LANDSCAPE ARCHITECTURAL DESIGN



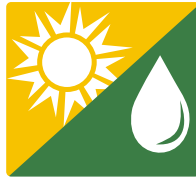
725 Piketown Road, Harrisburg, PA 17112  
Phone: (717)671-1636 Fax: (717)489-1438  
Email: [dakirkpatrick@comcast.net](mailto:dakirkpatrick@comcast.net)



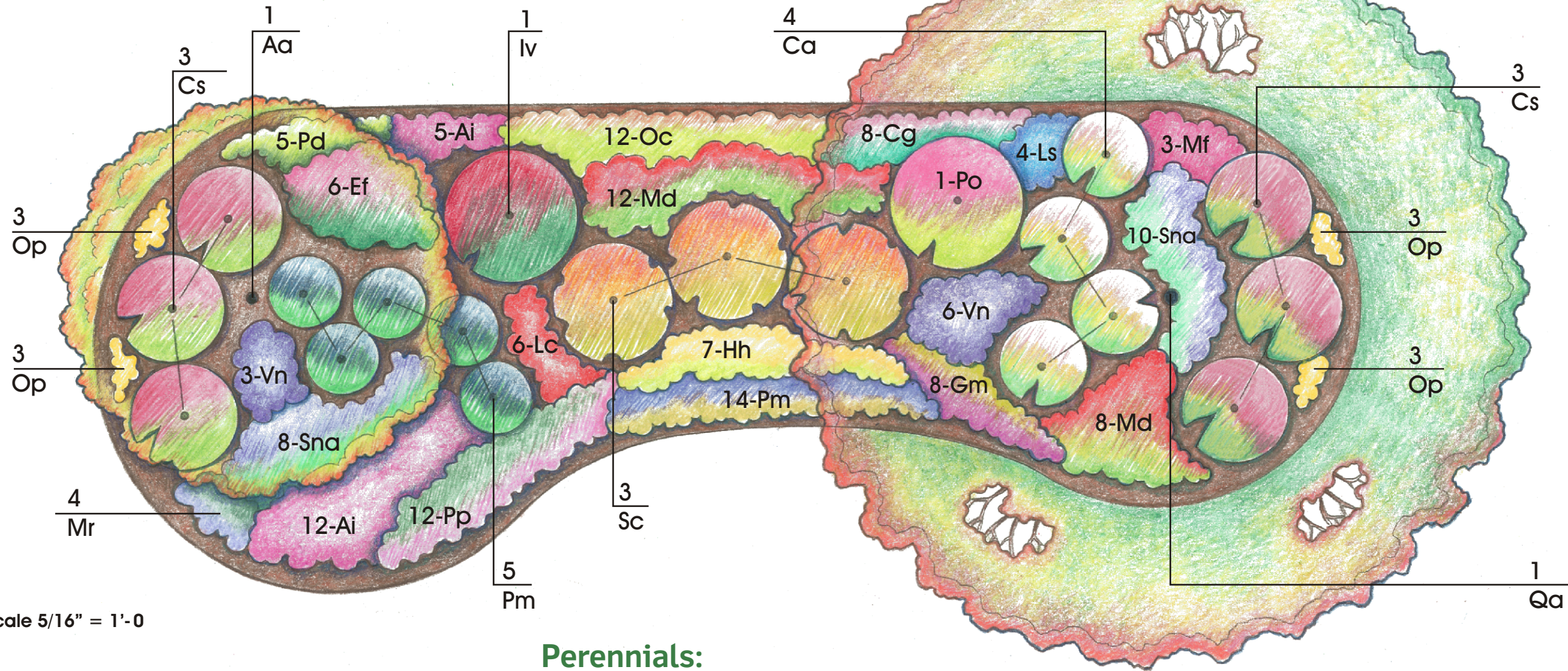
Scale 3/16" = 1'-0

Note: Template can be adapted by reducing scale or removing species to fit your specific garden needs.

30 ft.



# Sunny/Moist Garden



Scale 5/16" = 1'-0

## Shrubs:

- 5 - Pm *Photinia (Aronia) melanocarpa* - Black chokeberry
- 4 - Ca *Clethra ainifolia* - Summersweet
- 6 - Cs *Cornus stolonifera (sericea)* - Red-osier dogwood
- 1 - Iv *Ilex verticillata* - Winterberry holly
- 3 - Sc *Sambucus canadensis* - Elderberry
- 1 - Po *Physocarpus opulifolius* - Ninebark

## Perennials:

- 17 - Ai *Asclepias incarnata* - Swamp milkweed
- 18 - Sna *Symplocarpus novae-angliae* - New England aster
- 8 - Cg *Chelone glabra* - Turtlehead
- 6 - Ef *Eupatorium fistulosum* - Joe-pye-weed
- 8 - Gm *Geranium maculatum* - Wild geranium
- 7 - Hh *Heliopsis helianthoides* - Oxeye sunflower ("Summer Sun")
- 6 - Lc *Lobelia cardinalis* - Cardinal flower
- 4 - Ls *Lobelia siphilitica* - Great blue lobelia
- 4 - Mr *Mimulus ringens* - Monkey flower
- 20 - Md *Monarda didyma* - Bee-balm
- 3 - Mf *Monarda fistulosa* - Beelbalm (Wild bergamot)
- 12 - Op *Oenothera perennis* - Sundrops
- 5 - Pd *Penstemon digitalis* - Beard-tongue
- 14 - Pm *Phlox maculata* - Wild sweet William
- 12 - Pp *Phlox paniculata* - Garden phlox
- 9 - Vn *Vernonia noveboracensis* - New York ironweed

## Trees

- 1 - Aa *Amelanchier arborea* - Serviceberry
- 1 - Qa *Quercus alba* - White oak

## Ferns:

- 12 - Oc *Osmunda cinnamomea* - Cinnamon fern